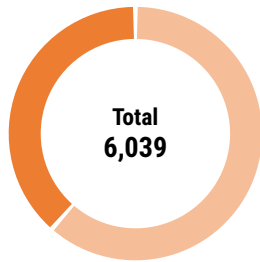


FACTS AND FIGURES



Damage Status - Private Structures

MAJOR HOUSING TYPOLOGIES

Typology	Municipal	District
Stone and Mud Mortar Masonry	47.85%	44.19%
Timber Frame Structure	43.49%	16.91%
Brick and Cement Mortar Masonry	3.40%	26.60%
Stone and Cement Mortar Masonry	1.66%	1.32%
Others	3.63%	10.97%

CBS damage assessment survey, 2015

HOUSING RECONSTRUCTION & RETROFIT UPDATES

Reconstruction Status

Total Eligible HHs	2,512
PA Agreement	2,226 / 286
I st Tranche received	2,226 / 286
II nd Tranche received	1,510 / 1,002
III rd Tranche received	945 / 1,567

Houses

Under Construction: 1,565 Completed: 650

Retrofitting Status

Total Eligible HHs	2,176
PA Agreement	1,137 / 1,039
I st Tranche received	1,125 / 1,051
II nd Tranche received	- / 2,176

Grievances

Registered: 3,756
Addressed: 3,756

Non-compliances

Registered: 79
Addressed: 71

Data Updated on: 2019-04-22 00:00:00

PO Presence

Active: No POs Reported
Phased Out: No POs Reported

OTHER SECTORS



Schools

Damaged: 79
Under Construction: 63
Construction Completed: 63



Health Posts

Damaged: -
Under Construction: -
Construction Completed: -

STATUS OF CONSTRUCTION MATERIALS

Materials	Unit	Req. Quantity*	Ava.	Cost (NRs.)**
Stone	m ³	19,010	-	-
Aggregate	m ³	18,100	-	-
Sand	m ³	2,018	-	-
Timber	cu. ft.	2,287	-	-
Cement (PPC)	Sack	-	-	-
Cement (OPC)	Sack	61,338	-	-
Rebars	kgs.	209,705	-	-
Tin	bundle	2,511	-	-
Bricks	pcs.	464,839	-	-

Types of Workers

1. Skilled mason
2. Labourer

Avg. daily wage (NRs.)

- / -
- / -

KEY CONTACTS

Municipal Office

Sarkesh Ghalan
Chairman
9855088688

Municipal Office

Er. Sudip kasula
Focal Person
9841754549

Municipal Office

Dhan Maya Syangtan
Deputy Chairman
9855089688

DLPIU-GMaLI

Bimal Kishor KP
Acting DLPIU-Chief
9855030632

Municipal Office

Raju Aryal
Chief Administration Officer
9855089788

DLPIU-Building

Sudip Achrya
DLPIU-Chief
9851153206

HHs WITH LAND ISSUES

No Reported Land Issues

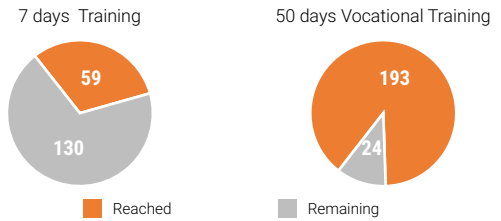
STATUS OF TECHNICAL STAFF

Staff	Available Nos.	Additional Req. Nos.
Engineers	-	-
Sub-Engineers	-	-
Asst. Sub-Engineers	-	-
Masons	- (7 days) - (50 days)	- (7 days) - (50 days)

Source: Municipal survey

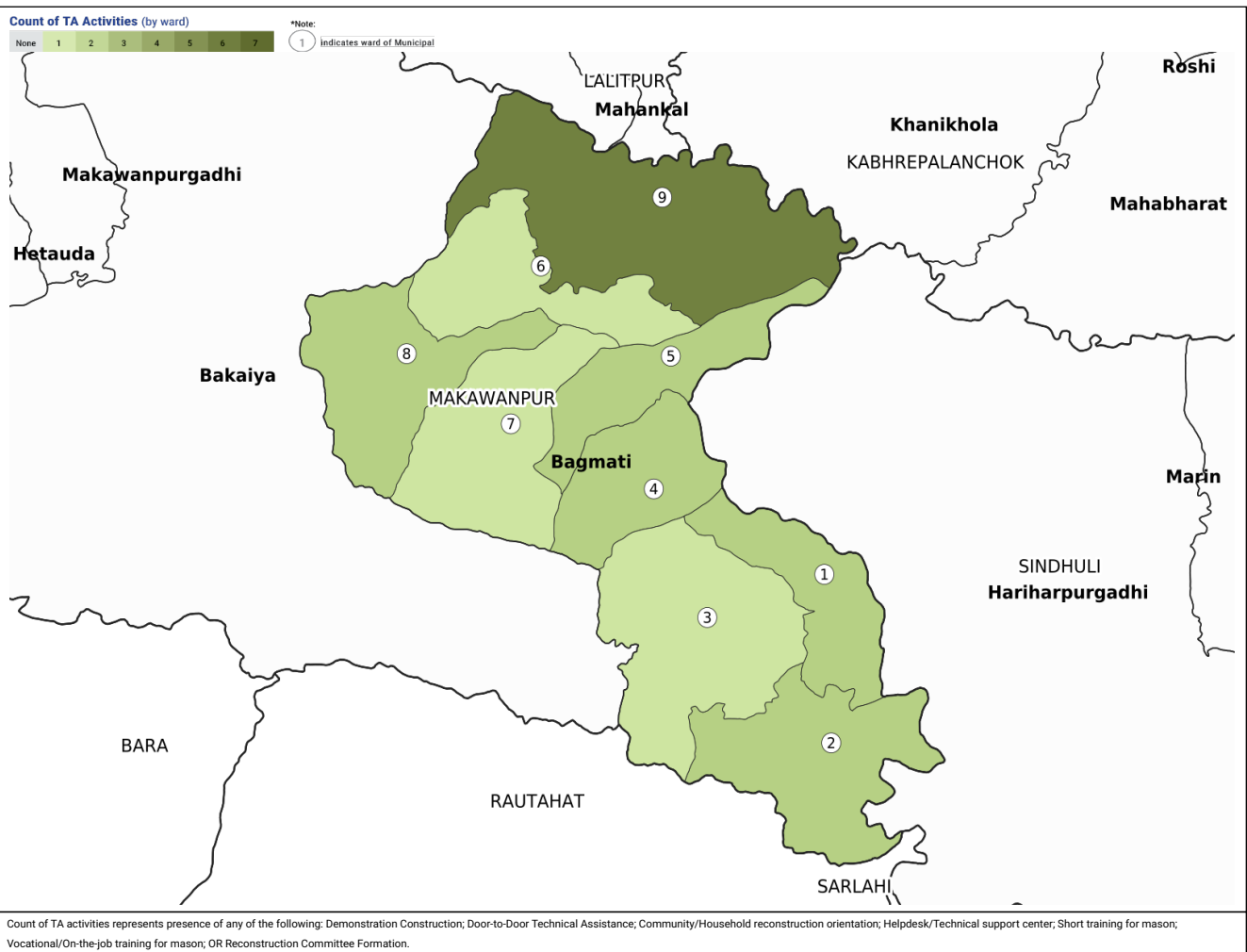
MASON TRAINING

Trainings (# out of total required)



Source: HRRP Analysis

TA ACTIVITIES MAP



FAQs

Q: What documents are required for enrolment in the GoN housing reconstruction programme?

A: Two copies of passport size photos and original copy and photocopy of land ownership card and citizenship card. Local officials at the Rural / Urban Municipality will be able to provide information and support and households can enrol at the Rural / Urban Municipality.

Q: Do we need to pay the engineers when they come to conduct inspections or provide technical assistance?

A: No, you do not have to pay the engineers, or any other staff, conducting inspections or providing technical assistance. If any field staff request payment for conducting inspection or providing technical assistance you should report it to the Rural / Urban Municipality officials.

For further information 1. (General Coordinator) 2. Kausal Bist (Technical Coordinator) 3. Sachin Malego (Information Management Officer)
9849787273 984166793